



keystone editions

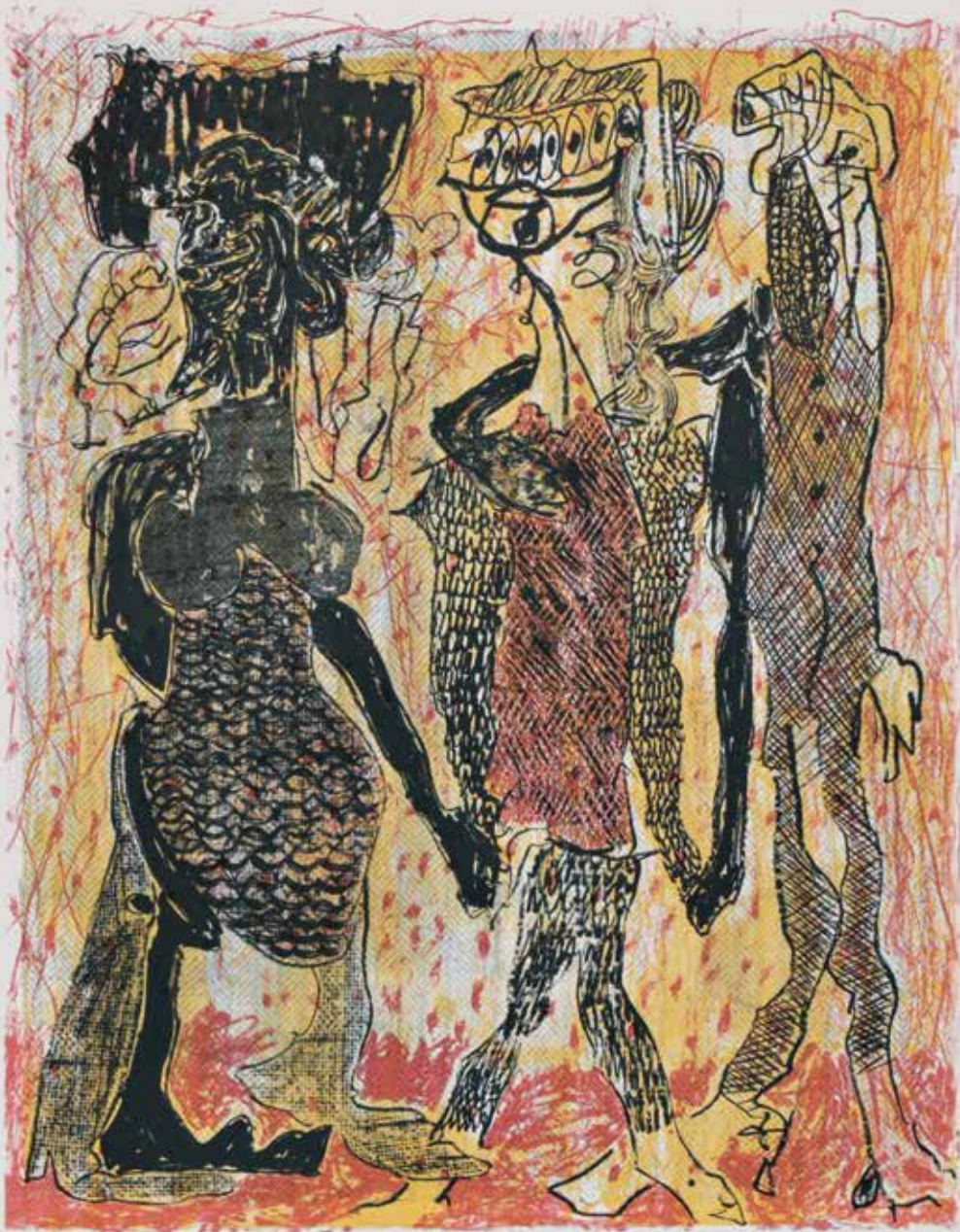


peter linde busk



**Armageddon Days are here Again, 2012**

Edition: 10 + 2. A.P.  
64 cm x 51.5 cm  
6-colour lithograph  
Printed by Ulrich Kühle



**Close the Lights**, 2012

Edition: 10 + 2. A.P.

64 cm x 51.5 cm

4-colour lithograph

Printed by Ulrich Kühle



**Unconditional Surrender, 2012**

Edition: 10 + 2. A.P.  
64 cm x 51.5 cm  
4-colour lithograph  
Printed by Ulrich Kühle



**Executioner, 2012**

Edition: 10 + 2. A.P.  
64 cm x 51.5 cm  
3-colour lithograph  
Printed by Ulrich Kühle

## Peter Linde Busk

Born 1973, Copenhagen, Denmark. Lives and works in Berlin.

In his paintings, prints and ceramics, Busk employs a cast of characters to figure states of melancholia, dejection and failure. His celebration of the antagonist is inspired by card design, literature and popular culture, tending towards portrayals of those who sit high: Kings and knights prevail, their stature betrayed by their audacious attire. Violently patterned, his images draw on the starkly direct marks of Art Brut. Busk's drive to fill space to excess means that the figure is often decorated to the point of parody, rudely mutated by his riches.

Across his work Busk sets up moments of suspension. Recalling the ruptured landscapes of Casper David Friedrich, his semi-figurative ceramic objects undulate on the threshold between viscous mass and emerging detail, almost freezing a moment of alchemical change. Elsewhere, as in his printmaking, graphic line just holds against the ballistic daubs gathering beneath and threatening a complete un-doing. The antagonist's uniform becomes a buttress, a desperate attempt at keeping the body raised sky-wards.

Busk's chorus perhaps figure the agony of reaching an impasse. Having elevated themselves to the top of the ladder, these former kings, now ridiculous, have nowhere left to go but down. But strangely, this moment of falling seems also affirmative. Bearing in mind that these are often self-portraits, perhaps this moment becomes a fable for the positivity of the 'un'; an ode to catastrophe's liberating potential.

### Education

- 2006 - 2009 The Royal Academy of Arts, London
- 2008 Gasthörerschaft zum Studium für Freie Kunst, w. professor Peter Doig, Kunstakademie Düsseldorf
- 2004 Hunter College of Art, City University of New York
- 2002 - 2006 The Slade School of Fine Art, University College London

### Solo Exhibitions

- 2013 Josh Lilley Gallery, London  
Galleri Bo Bjerggaard, Copenhagen  
The Staging Area, Holstebro Kunstmuseum, Holstebro
- 2012 Peter Linde Busk, ABC Berlin (solo presentation with Rob Tuffnell and MONITOR), Berlin  
No Pasarán, MONITOR, Rome
- 2011 Peter Linde Busk, LISTE16, Basel (solo presentation with Rob Tuffnell)  
Currahee, Rob Tuffnell, London
- 2010 Bold as a Lunatic Troupe of Demons in Drunken Parade, Galleri Christina Wilson, Copenhagen  
Full Catastrophe Living, Ancient and Modern, London

### Selected awards and scholarships

- 2008 Young artist of the year, Ledernes Hovedorganisation, Denmark
- 2007 Niels Wessel Bagges Art Foundation, Denmark
- 2006 Terence Cuneo Prize, London
- 2006 UCL Alumni Scholarship, London

### Selected collections and foundations

Saatchi Collection, London; Collection of Javier & Carlos Andrés Peres, Berlin; Rubell Family Collection, Miami; Susan and Michael Hort, New York; Ny Calsbergfondet, Copenhagen; Statens Kunstfond, Denmark.

---

Keystone Editions is a centre for contemporary printmaking located in the heart of Berlin. Our Tamarind Institute-trained master printers collaborate with professional artists from across the globe, to publish hand-printed, limited editions of original lithographs.

These images are available for purchase through our website or in person at the workshop. For more information and a complete list of artists and available works, please call us or visit: [www.keystone-editions.net](http://www.keystone-editions.net).

paul-lincke-ufer 33  
10999 berlin

tel.: +49 (0)30 8561 2736  
fax: +49 (0)30 8561 2737

info@keystone-editions.net  
www.keystone-editions.net

---